



## Get a Grip 8" Circle Template

**No Slipping ~ No Kidding!**

By Linda Winner







Template with Get-a-Grip Material

If you've cut circles before, you've probably grabbed a bowl, a plate or a dish. The problem is, your circles aren't always round! And they certainly don't look like each other. Cutting perfect, consistent circles are hard to do~!

This template makes it easy - especially when fabric is lofty like polar fleece, quilted fabric and Insul-brite or slippery like Oil Cloth. The 'get a grip' grabs it all! It makes a great baby bib or drool bib. Add Insul-Brite and whip up some cute Pocket Potholders or Pie Crust Potholders. Need another size? It's available; just ask.

**Videos** can be found at: [www.youtube.com/LindaVideos](http://www.youtube.com/LindaVideos). Click on Playlists, Winner Designs then Circle Potholder or Circle Pt 1 & Pt 2. More written directions can be found at: [www.WinnerDesigns.com/Extras](http://www.WinnerDesigns.com/Extras)

### Project Ideas:

			
Double Pocket Potholder Directions on Potholder Video	Pie Crust Potholder Directions & on Potholder Video	Baby Bib/Drool Bib (Directions on Video Pt 1)	Double Handed Pot Holder (Directions on website)

### Double Pocket Pot Holder –

These potholders are perfect for a quick gift for family and friends or just to make for yourself. With the Complete 8" Circle Template, they're quick & easy!

#### You need:

2 pieces cotton fabric: 8 1/2" x 8 1/2" each    1 piece Insul-Brite 8 1/2" x 8 1/2"

#### Pockets:

2 pieces cotton fabric: 8 1/2" x 8 1/2" each    2 pieces felt or batting 8 1/2" x 4 1/4"

**Binding:** 1 package Double Fold Binding

**Basic Sewing Supplies:** Sewing Machine, Iron, Pins, etc.

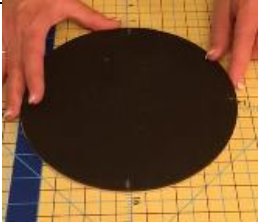



**Optional:** Basting Spray, metallic Sharpie or chalk pencil, fabric glue, plastic clothes pins

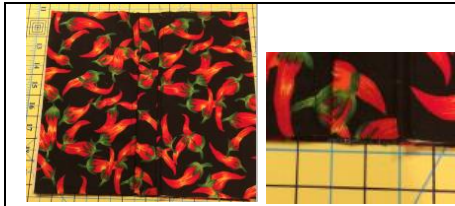


### Let's get started!

#### Laying out Your Fabrics:

Watch the video at [www.Youtube.com/Lindavideos](http://www.Youtube.com/Lindavideos) to see how to cut with the template! Cut front, back, pockets, and batting at the same time. Cut Insul-Bright separately.

			
<b>Marking your Template</b> If template doesn't have hash marks, find center of template and place 4 marks using a metallic Sharpie. If you don't want marks permanent, use a chalk pencil.	<b>Pockets</b> Take 1 pocket 8 1/2" x 8 1/2" and fold in half. Finger press. Open up and place 1 batting 8 1/2" x 4 1/4" on top. Line this up to the fold.	Repeat for other pocket. <b>Optional:</b> Use basting spray to adhere layers if you like.	<b>Sewing:</b> At sewing machine, topstitch in place 1/4" along folded edge. Do this for both pockets. (I used Martelli's SND Seam Guide Foot set at 1/4".)



**Layering Fabrics:**

Take back fabric and front fabric and place wrong sides together. Stack pockets on top with topstitching edges perfectly in center with a 1" space.



**Layering Template on Fabrics:**

Place Circle Template on top of layers so the hash mark is perfectly centered between the 1" space between pockets. Use your mat to help line up.



**Cutting Layers:**

Watch video to see 2 options for cutting. Cut cotton and batting layers. Not comfortable with a rotary cutter? Cut back and front fabrics 1<sup>st</sup> then cut pockets.

**Cutting Insul-Brite:**

Cut 1 circle out of Insul-Brite.



Cutting....



Here are all layers cut. Place back fabric down wrong side up then Insul-Brite then front layer right side up. Or use Insul-Brite in place of back fabric. **Optional:** Use basting spray to adhere layers if you like.



**Pinning Layers:**

Pin in place. This shows the back piece using Insul-Brite rather than fabric.



**Stitch Layers:**

Stitch close to edge before adding binding.



**Binding:**

Attach binding in whatever method you like – by hand or by machine, with a straight stitch or zig-zag. Or cheat by using fabric glue & plastic clothespins to hold in place. Then topstitch for a nice finished look.



Be sure to add a loop for hanging.



**Finished!**

**Pie Crust Pot Holder –**



Use ric rac to create a cute Pie Crust look to your Potholder. Steam a Seam or any peel off tape helps to hold everything in place. Stitch all of the layers down and then add a binding.

I hope you enjoy this template! Questions, suggestions? Contact me at [Linda@WinnerDesigns.com](mailto:Linda@WinnerDesigns.com) or 850-449-0249.

I'd love to see what you've made with this. Send me a picture or post on my Facebook & I'll give you a 10% discount on your next Winner Designs purchase. Pictures and a testimonial? I'll make it 15%! Just be sure to tell me~

Want to see all of my templates? Go to [www.WinnerDesigns.com](http://www.WinnerDesigns.com) and click on Products.

'Like' me on Facebook at [www.Facebook.com/LindaWinnerDesigns](http://www.Facebook.com/LindaWinnerDesigns). Check to see if I've got a contest going on!



By Linda Winner [Linda@WinnerDesigns.com](mailto:Linda@WinnerDesigns.com)

[www.WinnerDesigns.com](http://www.WinnerDesigns.com)